



Snosko Dosing Panel

Features + Order Form

A dosing panel with a configurable
chemical injection package

Safely dose and contain chemicals

snosko.com

Snösko Dosing Panel Features

Snösko dosing cabinets are available in a range of configurations to suit any application for chemical dosing and are ideal for containing high pressure chemical dosing applications.

Sliding, removable doors allowing for easy field access to pumps and pipework for operation and maintenance.

User manuals supplied for all configurations for recommended operation and maintenance procedures.

Low footprint using the compact DICE dosing module ensuring minimal space requirements.

Pumps can be controlled via pump **manual control input** or **auxiliary connections**.

Manufactured from **corrosion resistant** materials.

Designed to encapsulate high pressure sprays and leaks, directing them to a sump compartment.

Modular design meaning that it can be supplied as an empty box or a fully engineered turnkey system.

Available with **raised pump stands** preventing damage to dosing pumps in the case of a leak or spill.

Can be mounted on the ground **A**, a forklift-able stand **B**, an IBC bund **C**, or a tank wall **D**.

Specifications

Dosing Cabinet

- All cabinets enclosed with sliding doors (hinged doors available upon request).
- Integrated sump and drain for containing leaks.
- Lockable doors ensure controlled access.
- All dosing systems are designed to accommodate flooded suction and/or suction lift.

Material

- All wetted components to be thermoplastic.
- Piping components and seals to be selected as per chemical requirements.
- Skid to be built from Fibre Reinforced Plastics (FRP).

Installation Standards

The Snosko Dosing Panel can form part of a compliant solution with reference to the standards listed.

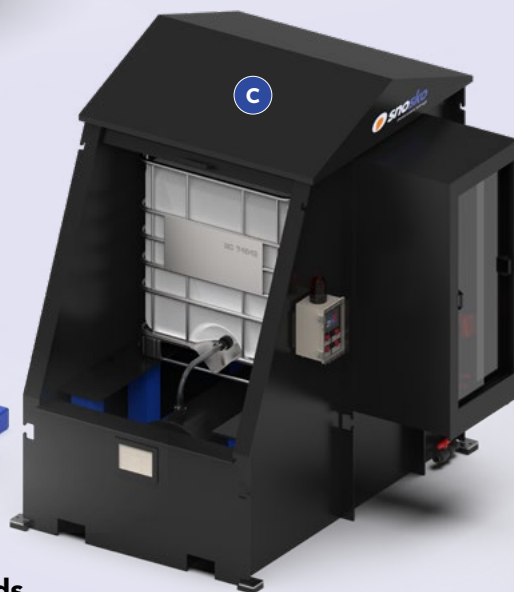
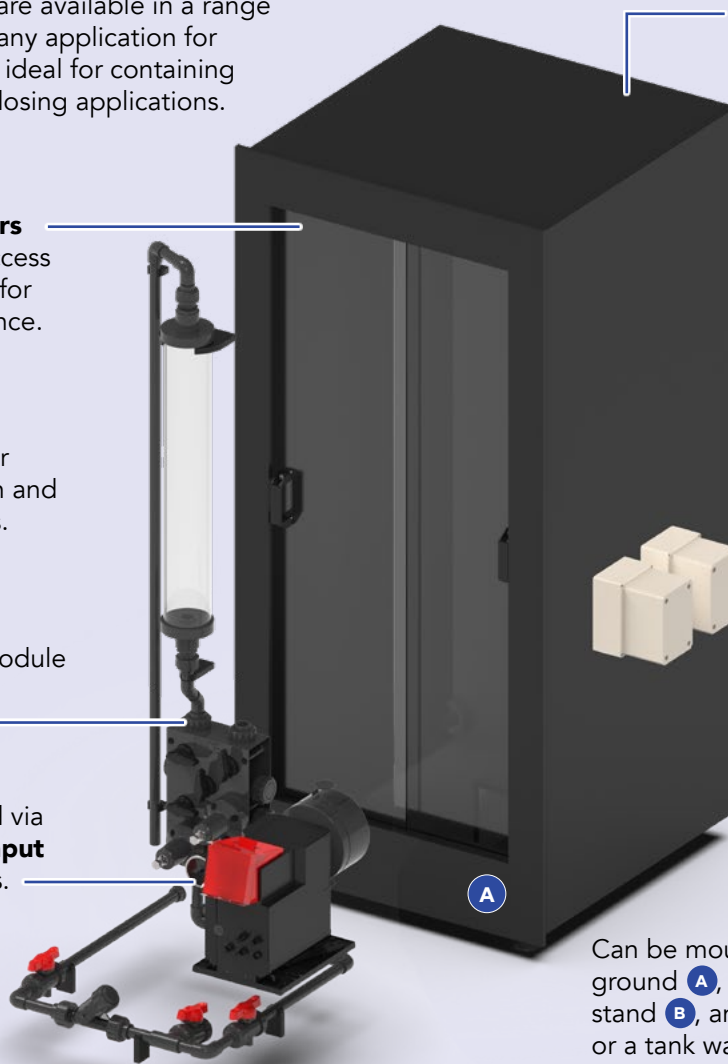
Note that there are items beyond the scope of the dosing system which end

users need to put in place to ensure the overall system is compliant with these standards.

- AS3780 – The storage and handling of corrosive substances.

- AS/NZS3000 – Wiring rules.

- AS1170 – Structural design actions.



Snösko Dosing Panel Order Form

P&IDs are supplied with cabinets where piping is included. A P&ID with all the available equipment is shown in Fig. 1.

Cabinets can be supplied as an empty box (Fig. 2), or fully turnkey (Fig. 3).

Dual pump arrangements can be supplied with a single or a redundant piping system as per Fig. 1.

Cabinet & Pump Stand Details

NOT REQUIRED if Snosko is to supply dosing equipment

1 Cabinet (mm)

<input type="text"/>	<input type="text"/>	<input type="text"/>	<input type="text"/>
Width	Depth	Height	Sump Depth

2 Pump Requirements

Quantity	<input type="text"/>	1 or 2
Pump Designation	<input type="text"/>	Make <input type="text"/> Model <input type="text"/>
Supply Option	<input type="text"/>	1. Free Issued to Snosko 2. Snosko to Supply

Snosko Supplied pumps all come with connections

Dosing Equipment Selection

Provide operating specifications and select any combination of optional equipment with a ✓ or a X.

Operating specifications

Chemical	<input type="text"/>
Concentration	<input type="text"/> %
Operating Temperature	<input type="text"/> °C
Maximum flow rate	<input type="text"/> L/hr
Back pressure at dosing point	<input type="text"/> bar

Optional equipment

(numbers correspond with Figure 1 above)

- 3 Block and bleed valves at inlet
Allows for system isolation
- 4 Strainer
Maximum particle size = 0.84mm
- 5 Single dosing module
Includes Pressure Relief Valve (PRV), Back Pressure Valve (BPV) & Pressure Gauge
- 6 Secondary dosing module
Includes same equipment as 3
- 7 Calibration column/s
Capacity based on flow
- 8 Pulsation dampener/s
Size based on flow
- 9 Dilution water input line
Socket connection provided

Figure 1

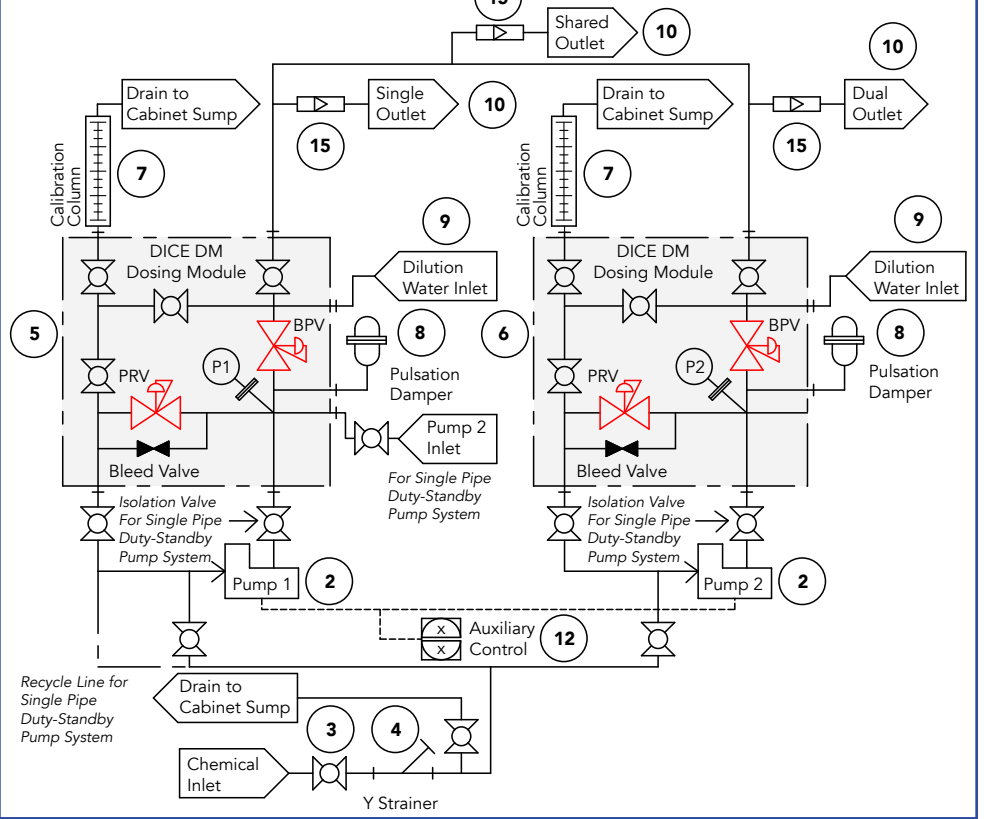
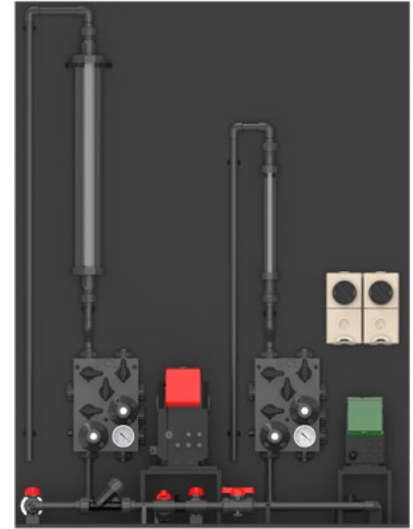


Figure 2



Figure 3



Additional Requirements

Specified flowmeters, sensors, pressure sensors and temperature sensors can be supplied as per request.

Please fill and send to info@snosko.com

If you require assistance filling out this form, or have any queries feel free to call +61 (0)431 042 890 or visit snosko.com

- 10 Outlet configuration
Single/Dual/Shared
- 11 Pump power connection
230V
- 12 Pump auxiliary control connection
4-20mA
- 13 Fork-liftable skid support frame
Manufactured from FRP
- 14 Ultrasonic sump alarm
240V/24V, for leak detection
- 15 Flowmeter (at outlet)
240V/24V, for flow measurement



Snosko is the market leader in the design and supply of chemical dual containment systems.

snosko.com